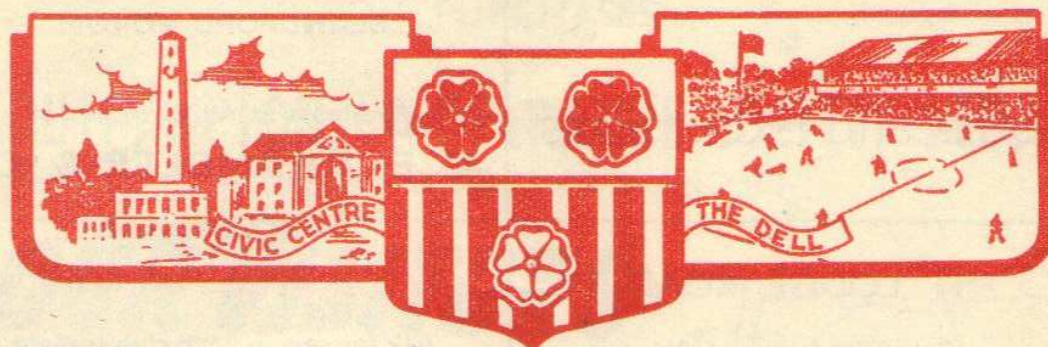
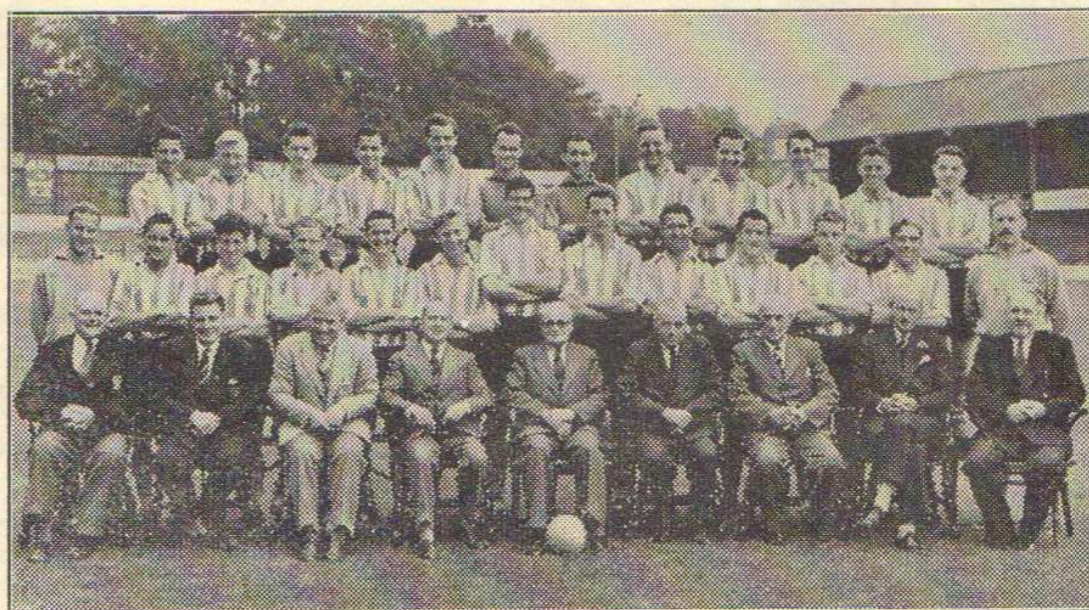


# SOUTHAMPTON FOOTBALL CLUB



OFFICIAL PROGRAMME

3d.



PATRON

**Admiral the Earl Mountbatten of Burma, K.G.**

PRESIDENT :

**H. G. Blagrave, Esq.**

VICE-PRESIDENT

**J. R. Sarjantson, Esq.**

CHAIRMAN :

**C. J. Cosgrove, Esq.**

DIRECTORS :

**J. H. G. Barber, Esq.**

**E. C. Chaplin, Esq.**

**John Corbett, Esq.**

**R. W. Jukes, Esq., J.P.**

**Lt.-Col. G. D. Meyrick, M.C.**

**G. E. H. Prince, Esq., O.B.E.**

**G. Reader, Esq.**

**R. J. Stranger, Esq., C.B.E., M.C.**

**W. Toomer, Esq.**

HON. CONSULTANT SURGEON :

**Raymond Purvis, Esq., F.R.C.S.**

HON. CONSULTANT ORTHOPAEDIC SURGEON

**H. H. Langston, Esq., F.R.C.S.**

HON. MEDICAL OFFICER : **Dr. D. B. Ramsay, M.B., Ch.B.**

SECRETARY :

**H. F. Didham**

TEAM MANAGER :

**E. T. Bates**

TRAINER :

**J. Gallagher**

PRIVATE HIRE SPECIALISTS

# SUMMERBEE'S COACHES



Tours and Excursions



11 LODGE ROAD

Tel. Southampton 54836

A SURE WINNER . .

# BADGER BEER

Brewed by

HALL & WOODHOUSE LTD.

BLANDFORD FORUM

Available at all Branches of

A. E. CHANDLER & Co.

Southampton

Ask for one in your club tonight

## FOLLOW THE GAME AGAIN

*in the*

# EMPIRE NEWS

and

# Sunday Chronicle

SUNDAY'S LIVELIEST SPORTS PAGES

## Bungalows

AND

## Houses

In course of Erection  
BASSETT, BURSLEDON  
TESTWOOD

**HAMTUN ESTATES LTD.**

1a, CEDAR ROAD  
SOUTHAMPTON

Telephone—27417

When next in ANDOVER

*visit the*

## Mikado Cafe

*Modern and up-to-date catering*

SERVICE A SPECIALITY

John Norris - Proprietor

Telephone Andover 3143

PLAY SAFE—

# SHOP AT THE CO-OP

*For all home and personal requirements and get*  
QUALITY, VALUE AND SERVICE, PLUS DIVIDEND  
ON PURCHASES.

## SOUTHAMPTON CO-OPERATIVE SOCIETY LTD.

ST. MARY'S ROAD AND BRANCHES

### OUR VISITORS



- Chandler** Signed from Bristol Rovers during the summer has displaced Burton who was the regular goalkeeper for a number of years.
- Hunt** In his eighth season with Swindon. A local boy, the Town being his only professional club.
- Fox** In his second season with Swindon, signed from Bristol Rovers.
- Cross** Fourth season with Swindon, previous club Everton.
- Hudson** One of the long service players, signed from Portsmouth; a fine club player.
- Pembery** Signed from Charlton during the summer, a splendid half back.
- Richards** Recently left the forces and signed professional forms.
- Gibson** In his third season with Swindon. Can play at outside-right.
- Owen** Another of the long service players with Swindon. A first class centre forward. Could have transferred to many 1st Division Clubs, but he preferred to stay at Swindon.
- Edwards** Signed from Chelsea. A good ball player now in his third season with Swindon.
- Williams** A local player, signed immediately after the war. Has played in most positions in the team.

---

*First Class Printing and First Class Service is our GOAL*

## A. R. SIMMONS & Co. Ltd.

### Printers



62 THREEFIELD LANE - SOUTHAMPTON

PHONE - 24921

PRINTERS OF THIS PROGRAMME

# The Solent Garage

Constructed of precast reinforced concrete units

Easily Erected

No Upkeep Costs

Erection Service Available

**PRICE £69-0-0 No Extras**

Delivered Free 80 miles

## THE BLOKCRETE COMPANY

LIMITED

MOUNT PLEASANT WHARF

SOUTHAMPTON

PHONE - 25061

## HANTS & DORSET MOTOR SERVICES LIMITED

### FOOTBALL EXCURSIONS

TO "SAINTS" AWAY  
MATCHES

## BOURNEMOUTH & BOSCOMBE

Depart 12.45 p.m. Fare 5/-

**Sat. Dec. 15th**

BOOK YOUR SEAT AT—

Hants & Dorset Motor Services Ltd.

Tours Office, Bedford Place, Southampton.

Telephone 23222



The makers of **Vigortone**  
VITAMIN C BLACKCURRANT  
3/3 per 13oz bott.

Ready to wear

### Suits

there is a wonderful

selection of finely

tailored suits . . .

economically priced

at

## Basticks

ABOVE BAR - SOUTHAMPTON

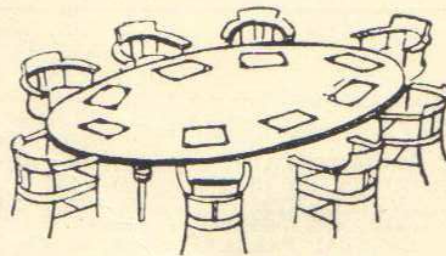
*Win, Lose or Draw . . .*

*However it influences your mood—  
NO result can affect the excellence  
of the catering and service at*

## THE COWHERDS INN AND RESTAURANT

# FROM THE BOARDROOM

**P**art of the fascination of football is its uncertainty. One can never be sure how any game will go, and a team's performance one week is never too reliable a guide on how they will play the next week. Before the match at Gillingham last Saturday most people



would have forecast that the game would develop into a battle between the Saints forwards and the Gillingham defence. Exactly the opposite happened. The Gillingham team played fast, aggressive football and gave our defence a very busy time. The fact that the Saints were able to keep their goal intact was a tribute to their tight defensive play, and particularly to a brilliant display in goal by John Christie, who thoroughly deserved the ovation he received at the end of the game. Many of you will have noticed that the Saints have the best defensive record to date of all the ninety-two clubs in the English League; they have in fact played the last four league games without having a goal scored against them.

On Monday evening we had a pleasant change from the tension of League football with the visit of the All Star Managers' XI.

It was a most entertaining game and our visitors gave a fine exhibition of using the ball intelligently.

Next Saturday we have another tough away match at Brentford, and we shall be very pleased to have as many supporters as possible at Griffin Park to encourage the Saints in their battle for promotion.

J. B.

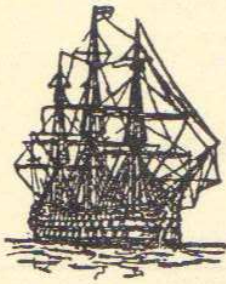
● BE PARTICULAR! ASK DEFINITELY FOR

# FEATHERY FLAKE

THE QUALITY

## Self Raising Flour

IT'S WELL WORTH WHILE!



Phone - Rownhams 461

Warehouses at Rownhams, Southampton  
and at Hythe and Romsey (for Bulk Storage)

# VICTORY TRANSPORT LTD.

Registered Office—

Rownhams House, Rownhams, Southampton

## Fixtures 1956/57

Football League Division 3				Football Combination			
		F A	Gate			F A	
1956				1956			
Aug. 18	BOURNEMOUTH & B.A.	H 3 0	18,121	Aug. 18	TOTTENHAM HOTSPUR ..	A	0 6
20	COVENTRY CITY	A 1 2	20,269	22	FULHAM ..	A	2 2
25	EXETER CITY	A 4 0	9,127	25	QUEENS PARK RANGERS	H	4 4
29	COVENTRY CITY	H 1 1	15,097	27	FULHAM ..	H	3 1
Sept. 1	CRYSTAL PALACE	H 3 0	14,118	Sept. 1	BRISTOL CITY ..	A	1 2
5	COLCHESTER UNITED	H 2 1	11,783	5	IPSWICH TOWN ..	A	5 4
8	SOUTHEND UNITED	A 2 1	9,860	8	CRYSTAL PALACE ..	H	1 1
10	COLCHESTER UNITED	A 1 3	7,208	12	PLYMOUTH ARGYLE ..	H	4 4
15	NORTHAMPTON TOWN	H 2 0	16,018	15	SOUTHEND UNITED ..	A	0 3
22	QUEENS PARK R.	A 2 1	12,792	18	ARSENAL ..	A	0 0
29	PLYMOUTH ARGYLE	H 2 2	17,192	22	SWANSEA TOWN ..	H	1 0
Oct. 3	NORWICH CITY	H 2 0	18,986	29	PLYMOUTH ARGYLE ..	A	2 4
6	MILLWALL	A 0 0	14,272	Oct. 6	LEYTON ORIENT ..	H	4 2
13	BRIGHTON & HOVE A.	H 1 0	22,103	13	ALDERSHOT ..	A	1 1
20	GILLINGHAM	A 0 0	10,375	20	BOURNEMOUTH & B.A.	H	5 5
27	SWINDON TOWN	H		27	BRISTOL ROVERS ..	A	
Nov. 3	BRENTFORD	A		Nov. 3	CARDIFF CITY ..	H	
10	ALDERSHOT	H		10	PORTSMOUTH ..	A	
17	(1)			17	MILLWALL ..	H	
24	SHREWSBURY TOWN	H		24	SWINDON TOWN ..	A	
28	NORWICH CITY	A		Dec. 1	BRIGHTON & HOVE A.	H	
Dec. 1	WALSALL	A		8	CHELSEA ..	A	
8	(2)			15	TOTTENHAM HOTSPUR ..	H	
15	BOURNEMOUTH & B.A.	A		22	QUEENS PARK RANGERS	A	
22	EXETER CITY	H		25			
25	READING	A		26	BOURNEMOUTH & B.	A	
26	READING	H		29	BRISTOL CITY ..	H	
29	CRYSTAL PALACE	A					
1957				1957			
Jan. 5	(3) NEWPORT COUNTY	A		Jan. 5	READING ..	H	
12	SOUTHEND UNITED	H		12	CRYSTAL PALACE ..	A	
19	NORTHAMPTON TOWN	A		19	SOUTHEND UNITED ..	H	
26	(4) NEWPORT COUNTY	H		26	READING ..	A	
Feb. 2	QUEENS PARK R.	H		Feb. 2	SWANSEA TOWN ..	A	
9	PLYMOUTH ARGYLE	A		9	BIRMINGHAM CITY ..	H	
16	(5) MILLWALL	H		16	LEYTON ORIENT ..	A	
23	BRIGHTON & HOVE A.	A		23	ALDERSHOT ..	H	
Mar. 2	(6) GILLINGHAM	H		Mar. 9	BRISTOL ROVERS ..	H	
9	IPSWICH TOWN	A		16	CARDIFF CITY ..	A	
16	BRENTFORD	H		23	PORTSMOUTH ..	H	
23	(S.F.) ALDERSHOT	A		30	MILLWALL ..	A	
30	WATFORD	H		Apr. 6	SWINDON TOWN ..	H	
Apr. 6	SHREWSBURY TOWN	A		13	BRIGHTON & HOVE A.	A	
13	WALSALL	H		19			
19	TORQUAY UNITED	A		20	CHELSEA ..	H	
20	SWINDON TOWN	A		22			
22	TORQUAY UNITED	H		27	ARSENAL ..	H	
27	WATFORD	A		May 4			
MAY 1	IPSWICH TOWN	H					
4	(Final)						

WEMBLEY TO THE SPORTS CENTRE

*We supply them All*

# TOOMERS SPORTS HOUSE

Telephone — — — — — Southampton — — — — — 23694

# TODAY'S MATCH

SATURDAY, OCTOBER, 27th, 1956

## SOUTHAMPTON

Colours : RED and WHITE VERTICAL STRIPED SHIRTS, BLACK KNICKERS  
RIGHT LEFT

	<b>Christie</b>			
<b>Wilkins</b> 2		<b>Traynor</b> 3		
<b>McLaughlin</b> 4	<b>Parker</b> 5	<b>Elliott</b> 6		
<b>Flood</b> 7	<b>Reeves</b> 8	<b>Shields</b> 9	<b>Mulgrew</b> 10	<b>Hoskins</b> 11

### REFEREE

Mr. J. J. BAXTER  
of ROYSTON



### LINESMEN :

Mr. H. V. GISBORNE (Red Flag)  
Mr. L. S. COOK (Yellow Flag)

<b>Williams</b> 11	<b>Edwards</b> 10	<b>Owen</b> 9	<b>Gibson</b> 8	<b>Richards</b> 7
<b>Pembury</b> 6		<b>Hudson</b> 5		<b>Cross</b> 4
	<b>Fox</b> 3		<b>Hunt</b> 2	
		<b>Chandler</b>		

LEFT

RIGHT

## SWINDON TOWN

Colours: RED SHIRTS and WHITE KNICKERS

## NEXT HOME MATCHES

Monday, Oct. 29th. F.A. County Youth Challenge Cup.  
2nd. Round

**HAMPSHIRE v. WILTSHIRE** Kick off 7.30 p.m.

Prices : West Stand only Centre 2/-, Wings 1/6d. Ground 1/-.

*Football Combination*

Saturday November 3rd. **CARDIFF CITY.** Kick off 3 p.m.

BRING A FRIEND!

# TEAM MANAGER'S NOTES

THE MATCH at Gillingham on Saturday was indeed a hard one. Once again our defence, covering and playing very tight, gave nothing away and with John Christie at his best, withstood a great deal of heavy pressure. Forward—we worked very hard in defence but seldom made the opportunity to really get into the game with our attacking play.

One of the vital phases of our success to date has been the tremendous fight away from home with eight points from eight matches to back it up. This is a hard, tough League, with the fighting qualities of any team the deciding factor in the majority of games, but the points earned 'away' from home are vital in a promotion drive.

Many thanks to all the Supporters who came along on Monday evening. I hope you will agree that you were rewarded with a most entertaining game. Confidentially, I was hoping that just one member of the All Star XI would fail to arrive at the Dell by kick-off time—it would have given me the opportunity of putting my boots on once again!

It is gratifying to find that the hard work and enthusiasm of Jimmy Shields have not been overlooked. The recognition of the Irish F.A. in selecting him to play in Belfast on Wednesday last, will, we hope, be the forerunner of further honours.

Most disappointed player on the Dell staff last week was John Bailey. The very day he was selected to play for the England Youth XI v. Hungary, he underwent a minor operation which will prevent him from playing for at least two weeks.

On Wednesday, November 7th, our Youth Side travel to Cardiff when they will have a very stiff task in the Second Round of the F.A. Youth Challenge Cup Competition.

**A FIGHTING SIDE DESERVES ENCOURAGEMENT—KEEP IT UP! E.T.B.**

## JIMMY GALLAGHER

"OUR JIM" is a man of many parts. He is a qualified F.A. Coach, a physio-therapist and during the war was a Physical Training Instructor with the Grenadier Guards—an ideal background for a trainer. As a school-boy footballer, he captained the Lancashire Schools team and subsequently played as a professional for Bury and Notts County. Jim is one of the "back room boys" whose work has contributed greatly to the success of the club.



## SUPPORTERS' CLUB NOTES

WHAT an ovation, John Christie received, after the match at Gillingham last Saturday. It was a grand show of crowd sportsmanship. The Saints defence had a gruelling time, and came through with flying colours. Our attack still needs to "Click."

We know it, and they know it, so give them all the encouragement you can, to help them find the answer to their shortcomings.

They will come off eventually, and of course, they must, to be able to retain their exalted position.

By the way, isn't the Dell pitch in glorious condition? All credit to the groundsmen and his staff, for their efforts.



# VERNON & TEAR LTD.

The Premier Food Store of the South

**52 ABOVE BAR STREET**

Branches at Shirley, Eastleigh and Chandler's Ford



*For Fresh Food of every description*

---

## HANDLEY PAGE LTD.

(London & Hertfordshire)

Opportunities of unlimited scope and of the widest interest occur within the company's departments for ambitious men of quality.

Applications are invited from:-

**AERODYNAMICISTS — STRESSMEN**  
**PROJECT DESIGN DRAUGHTSMEN**  
**SENIOR & INTERMEDIATE DRAUGHTSMEN**  
**TECHNICAL ASSISTANTS**  
**MECHANICAL & ELECTRICAL ENGINEERS**

Applications considered in strictest confidence.

Write stating age and full particulars to: **STAFF OFFICER, HANDLEY PAGE LTD.**  
**CRICKLEWOOD, LONDON, N.W. 2**

---

# CLUB COMMENTS

## RULES

### 4. FOULS—Charging

Players may charge if the charge is made fairly and when the ball is within reasonable playing distance of the players concerned and they are definitely attempting to play it, in order either to gain possession of the ball or to retain possession of the ball when challenged by an opponent.

A fair charge is one in which the player fairly "shoulders" his opponent without using his arms as a means of pushing, and which is not violent or dangerous.

It is possible for a player to charge an opponent fairly but at the wrong time viz., when the ball is *not* within playing distance. If it is considered by the referee that such action infringes LAW 12, the offending side forfeits an indirect free-kick whether the offence be inside or outside the penalty area.



## THE NEW GARAGE

(PROPRIETOR H. HOLDEN)

**WESTERN ESPLANADE**  
**SOUTHAMPTON**

CAR SALES  
SELF DRIVE  
HIRE

Tel: 22009  
**24 Hour Service**

ALL  
ESSO PRODUCTS  
LUBRICATION  
SERVICE



football fans read

# NEWS OF THE WORLD

expert reports



Matches up to and including Sat. 20th Oct. 1956

	P.	W.	D.	L.	F.	A.	P.
Torquay United	16	9	5	2	35	24	23
<b>Southampton</b>	<b>15</b>	<b>9</b>	<b>4</b>	<b>2</b>	<b>26</b>	<b>11</b>	<b>22</b>
Colchester Un.	16	8	3	5	38	24	19
Newport County	16	6	7	3	24	16	19
Brentford	16	8	2	6	35	32	18
Watford	16	8	2	6	29	22	18
Gillingham	16	7	4	5	38	25	18
Reading	16	7	4	5	26	23	18
Shrewsbury Tn.	16	5	8	3	18	24	18
Brighton & H.	16	7	3	6	40	29	17
Bournemouth	16	5	7	4	26	19	17
Millwall	16	6	4	6	26	32	16
Q.P.R.	16	6	4	6	21	21	16
Aldershot	16	6	3	7	32	36	15
Northampton	16	7	3	6	26	21	15
Exeter City	16	4	6	6	20	22	14
Crystal Palace	16	2	10	4	19	26	14
Coventry City	16	5	4	7	19	26	14
Norwich City	15	5	4	6	18	26	14
Ipswich Town	16	5	3	8	25	26	13
Walsall	16	4	4	8	19	25	12
Swindon Town	16	5	1	10	23	41	11
Plymouth Argyle	16	3	5	8	14	33	11
Southend United	16	3	4	9	24	32	10

## THE FOOTBALL COMBINATION Table of Results including 20th Oct. 1956

	P.	W.	D.	L.	F.	A.	Pts
Bournemouth & Boscombe	14	9	4	1	39	22	22
West Ham United	13	9	3	1	27	12	21
Tottenham Hotspur	12	9	1	2	51	20	19
Arsenal	15	8	3	4	42	24	19
Leicester City	12	8	2	2	33	12	18
Bristol Rovers	12	7	3	2	33	16	17
Leyton Orient	12	7	1	4	29	19	15
<b>Southampton</b>	<b>15</b>	<b>4</b>	<b>7</b>	<b>4</b>	<b>33</b>	<b>39</b>	<b>15</b>
Chelsea	11	6	2	3	26	19	14
Luton Town	11	6	1	4	28	15	13
Crystal Palace	11	5	3	3	19	15	13
Aldershot	12	5	3	4	25	34	13
Charlton Athletic	11	6	0	5	24	26	12
Queen's Park Rangers	12	5	2	5	25	29	12
Cardiff City	12	5	1	6	23	22	11
Brentford	11	4	3	4	16	17	11
Southend United	12	5	1	6	22	27	11
Bristol City	12	3	5	4	16	21	11
Swindon Town	12	5	1	6	19	25	11
Millwall	12	4	3	5	18	24	11
Portsmouth	13	4	2	7	22	24	10
Watford	13	3	4	6	17	26	10
Plymouth Argyle	13	4	2	7	22	33	10
Birmingham City	12	3	3	6	17	20	9
Northampton Town	11	3	3	5	23	31	9
Reading	11	4	1	6	20	29	9
Norwich City	12	3	2	7	15	20	8
Brighton & Hove Albion	11	3	2	6	20	37	8
Coventry City	12	3	1	8	20	30	7
Ipswich Town	12	2	3	7	22	35	7
Fulham	12	1	5	6	12	24	7
Swansea Town	12	1	3	8	17	28	5

### Half Time Scoreboard

<b>A</b> Aston Villa Birmingh'm	<b>J</b> Sunderland Portsmouth	<b>R</b> Exeter City Brentford ..
<b>B</b> Blackpool .. Man. Utd. ..	<b>K</b> Tottenham Burnley ...	<b>S</b> Newport Go Torquay ...
<b>C</b> Bolton W .. Chelsea ...	<b>L</b> Wolves ..... Cardiff City	<b>T</b> North'ton .. Shrewsbury
<b>D</b> Charlton ... Newcastle ..	<b>M</b> Bristol City Huddersf'd	<b>U</b> Norwich ... Brighton ...
<b>E</b> Everton ... Arsenal ...	<b>N</b> Rotherham Bristol R ...	<b>V</b> Plymouth A Ipswich ...
<b>F</b> Leeds Utd. . Preston ...	<b>O</b> Colchester . Millwall ...	<b>W</b> QPR ..... Walsall ...
<b>G</b> Luton ..... West Brom.	<b>P</b> Coventry ... Gillingham	<b>X</b> Reading ... Bournemouth.
<b>H</b> Man. City .. Sheffield W	<b>Q</b> C Palace ... Aldershot ..	<b>Y</b> Southend ... Watford ...

## **SOUTHAMPTON FOOTBALL CLUB**

Postal address:— The Dell, Milton Road, Southampton. Phone, 23408

**Honours:**— Finalists, F. A. Cup, 1899-1900, 1901-2.  
Semi-Finalist F. A. Cup, 1897-8, 1907-8, 1924-5, 1926-7.  
Champions of Football League, Division 3 (South) 1921-22.  
Winners of Football Combination Cup, 1954-55  
Winners of Pickford Cup, 1955-56.

### **ADMISSION PRICES**

**Numbered and Reserved Seats** (bookable in advance)

West Stand, Centre Block, 6/6.

**Unreserved Seats** (Pay at turnstiles) East Stand, Centre Block, 5/-

West Stand Wings 4/6

East Stand Wings 4/-

**Standing:**— Enclosures 3/- Ground 2/6 and 2/-, Boys, 1/- (Stile 31)

**Reserve Team Matches:**— Stands (all sections), 1/6, Ground 1/- (Boys, 6d)

### **THE SOUTHAMPTON ALBION BAND**

**Conductor:** Mr. W. H. BREEZE, L.R.A.M., plays at all Home matches

Commentaries on all first team matches are relayed to local hospitals by members of Southampton Toc H.

---

# **BRYN ELLIOTT**

Off Licence - 51 Waterloo Rd.

*BEER, WINE and SPIRIT MERCHANT*

## **WHITBREAD ALES**

**MACKESON STOUT, GUINNESS, etc., etc.**

**WEDDINGS AND PRIVATE PARTIES CATERED FOR**

Deliveries Daily - Phone 21838

**ALWAYS ASK FOR WHITBREAD!**

---

Telephone 24837

## **A. E. HAYTER & SONS**

**39 THE AVENUE - SOUTHAMPTON**

**Ford, Standard & Canadian Ford Agents**  
**Comprehensive stock of reliable used cars**

*See ERIC DAY, our Service Manager for advice on repairs to your car,  
and our wash and grease bays, which are fitted with all the latest  
equipment.*

**ALL Services Bookable in Advance**

"More people drink  
**WATNEY'S**  
than any other  
**BROWN ALE**"



*Have YOU tried it?*

